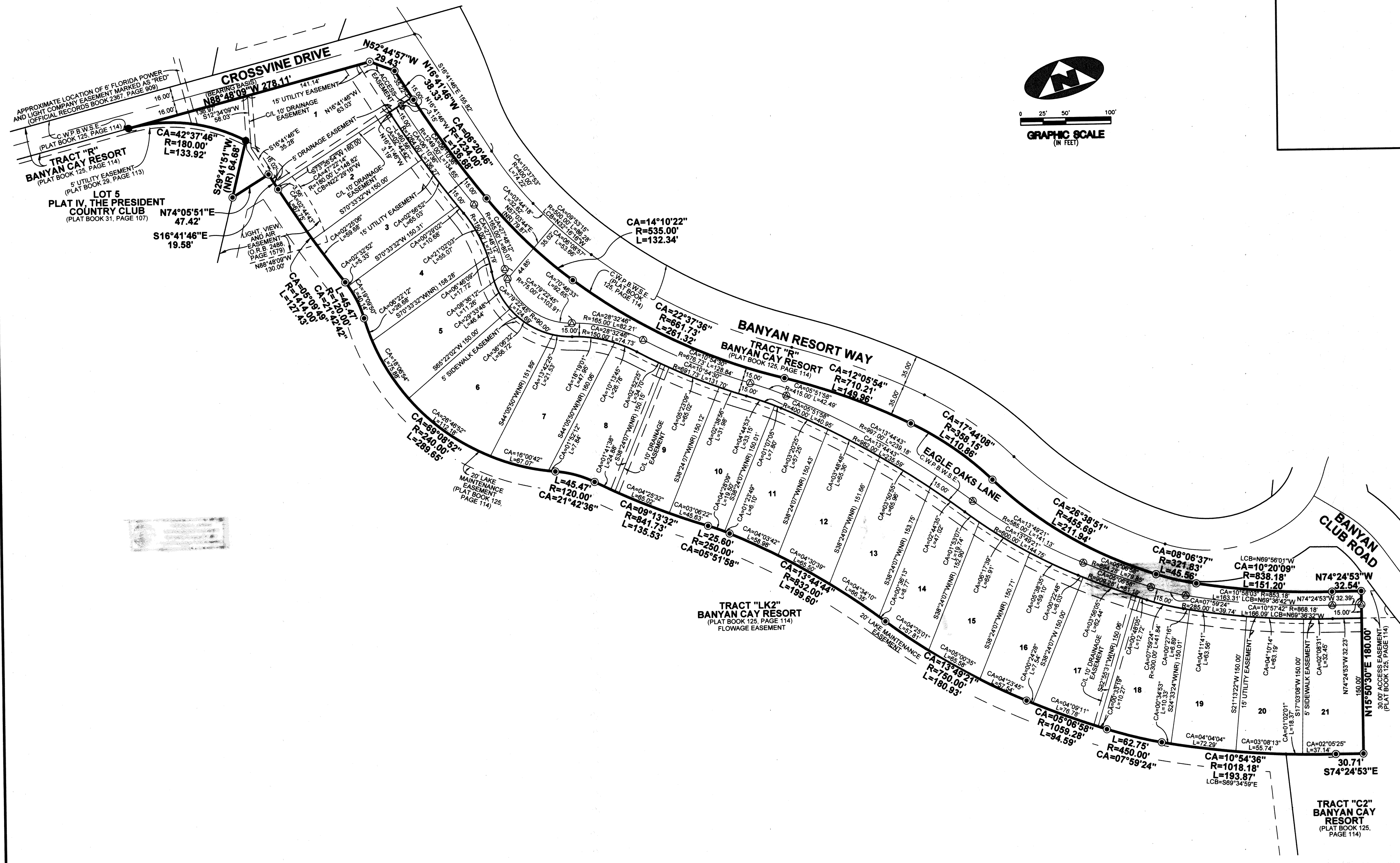


BANYAN CAY RESORT REPLAT OF TRACT "L1"

BEING A REPLAT OF TRACT "L1", BANYAN CAY RESORT, AS RECORDED IN PLAT BOOK 125, PAGE 114, PUBLIC RECORDS, PALM BEACH COUNTY, FLORIDA, AND LYING IN SECTIONS 7 AND 8, TOWNSHIP 43 SOUTH, RANGE 43 EAST, CITY OF WEST PALM BEACH, PALM BEACH COUNTY, FLORIDA



LEGEND			
●	DENOTES A SET PERMANENT REFERENCE MONUMENT IRON ROD AND CAP STAMPED "PRM LB7344"	CA	DENOTES CENTRAL ANGLE
●	DENOTES A FOUND PERMANENT REFERENCE MONUMENT IRON ROD AND CAP STAMPED "PRM LB7344"	C/L	DENOTES A CENTERLINE
⊙	DENOTES A SET PERMANENT CONTROL POINT NAIL AND WASHER STAMPED "PCP LB7344"	C.W.P.B.W.S.E.	DENOTES A CITY OF WEST PALM BEACH WATER AND SEWER EASEMENT
⊙	DENOTES A SET PERMANENT REFERENCE MONUMENT NAIL & WASHER STAMPED "PRM LB7344"	LCB	DENOTES ARC LENGTH DISTANCE
		(NR)	DENOTES A NON RADIAL LINE
		R	DENOTES RADIUS DISTANCE

SURVEYOR'S NOTES

- THE BEARING BASIS (BASE BEARING), AS SHOWN HEREON, IS BASED ON THE PLATTED BEARING OF N88°48'09"W, ALONG THE NORTH LINE OF TRACT "L1", BANYAN CAY RESORT, AS RECORDED IN PLAT BOOK 125, PAGE 114, AS SHOWN HEREON, AND ALL OTHER BEARINGS ARE RELATIVE THERETO.
- IN THOSE INSTANCES WHERE UTILITY OR DRAINAGE STRUCTURES ARE CONSTRUCTED IN CONFLICT WITH THE PLATTED PERMANENT CONTROL POINT POSITION STRADDLERS MONUMENTED AS PERMANENT CONTROL POINTS WILL BE SET TO REFERENCE THE PLATTED POSITION.
- LINE(S) THAT INTERSECT CURVES ARE RADIAL UNLESS OTHERWISE NOTED.
- THIS INSTRUMENT WAS PREPARED BY STEPHEN L. SHIRLEY, PROFESSIONAL SURVEYOR AND MAPPER NO. 3918, IN AND FOR THE OFFICES OF ASSOCIATED LAND SURVEYORS, INC., 4152 WEST BLUE HERON BOULEVARD, SUITE 121, RIVIERA BEACH, FLORIDA, 33404

ASSOCIATED LAND SURVEYORS, INC.
 4152 W. BLUE HERON BLVD. SUITE 121
 RIVIERA BEACH, FLORIDA 33404
 PHONE: (561) 848-2102 FAX: (561) 844-9659
 LB NO. 7344 EMAIL: als@allsurvey.net

SCALE: 1"=50'	WO. NO.: P1302.L1
DWN: BLS	SHEET 2 OF 2